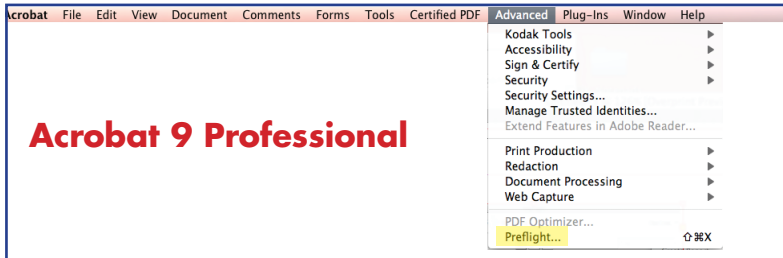


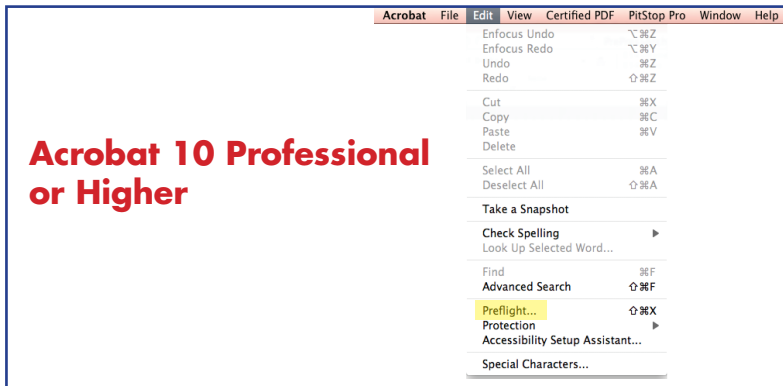
Importing Acrobat Preflight Preset

Save the profile to your desktop. You will need to navigate to it in order to load it into the preflight panel.
Once loaded, you can throw it away.

Acrobat 9 Professional



Acrobat 10 Professional or Higher



Accessing the Preflight Window

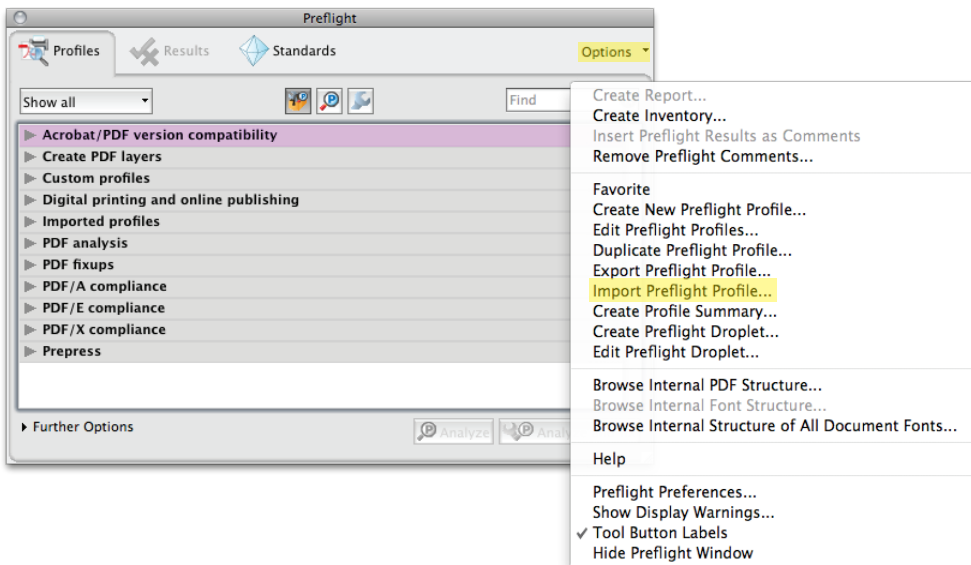
If in Acrobat 9 or lower:

- Go to **Advanced - Preflight**

If in Acrobat 10 or higher:

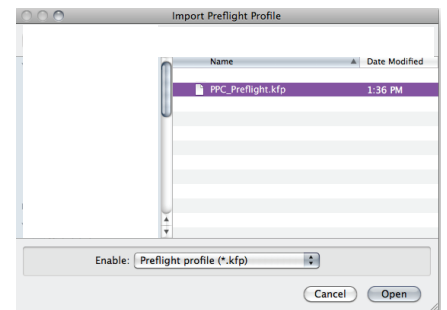
- Go to **Edit - Preflight**

The Preflight Window



Click **Options**:

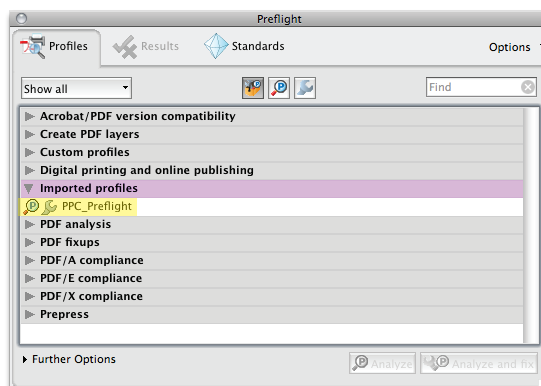
- Go to **Import New Preflight Profile...**



- Navigate to the location of the preflight profile, select it & click "Open"

It will now be available under the Imported Profiles drop-down.

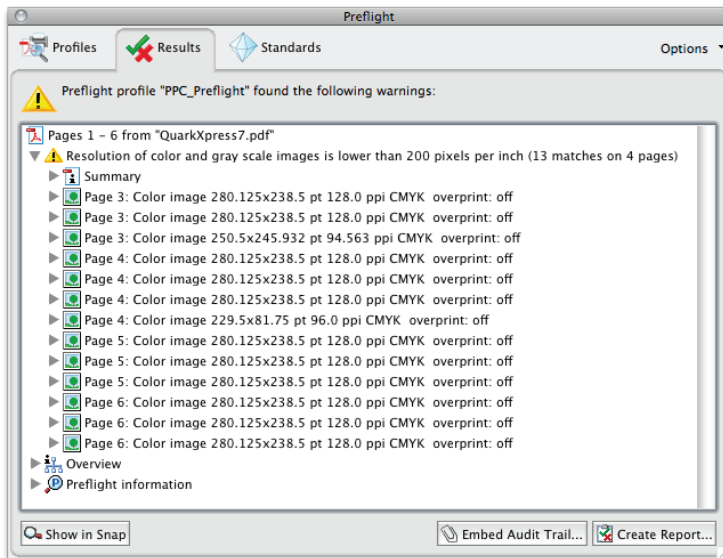
To run, select the profile and click "Analyze"



This Profile Will Flag:

- Images under 200dpi
 - Non-CMYK color (including Spot colors)
 - Un-embedded fonts
 - The following problematic fonts - Kalinga, Kartika, Segoe
(if these fonts are used, we recommend outlining them as they will blow out when the job is sent to plate)
- To change the parameters, select it and then click on "Edit"*

The Preflight Report

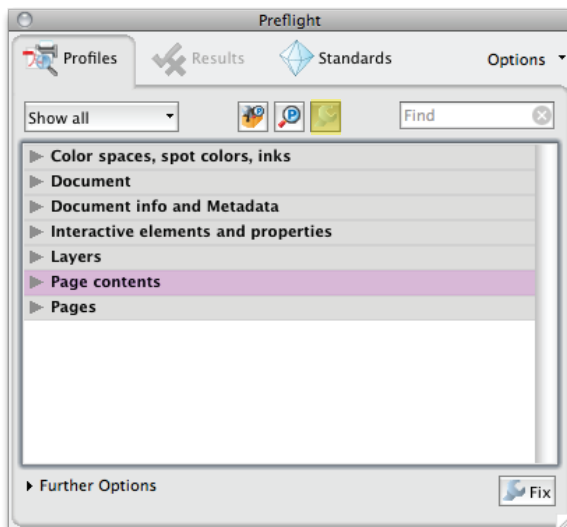


If you expand the arrows to the left of the items in the report, you can get more detail on the individual warnings.

You can double-click on each page and it will take you to and put a yellow box around the element it's referring to.

Helpful Fix-ups:

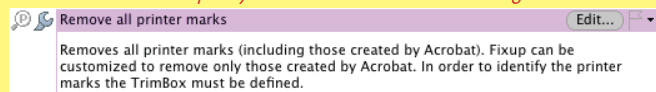
There are several fix-ups available in Acrobat, here are three of the most common you may need to use. To access the fix-ups, click the "wrench" icon on the preflight window. You will see several categories. If you expand the arrows next to each, there will be several options available.



Page Contents - Remove All Printer Marks

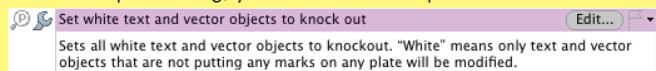
If you receive an ad that has any type of printer marks on it, you can run this fix-up to remove them.

This fix-up may not work if it is a rasterized image.



Color Spaces, Spot Colors, Inks - Set White Text & Vector Objects to Knock Out

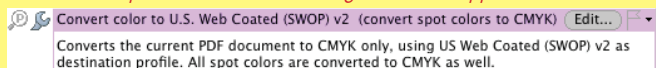
If you notice white type or elements disappearing when you toggle the overprint setting, you can run this fix-up to correct the issue.



Color Spaces, Spot Colors, Inks - Convert Color to US Web Coated (SWOP) v2

If you have non-CMYK elements or spot colors present, this fix-up will convert them to CMYK.

Check the artwork closely when using this fix-up for major shifts in color and changes in overall appearance.



Please Note: While the fix-ups are very useful, you can experience inconsistencies depending on how the PDF file was built and which fix-up you are using. When applying a fix-up, Acrobat will ask you to "save" the file, I would recommend saving a copy in case you need to go back to the original file. Be sure to review the page closely to ensure nothing changed from the original.